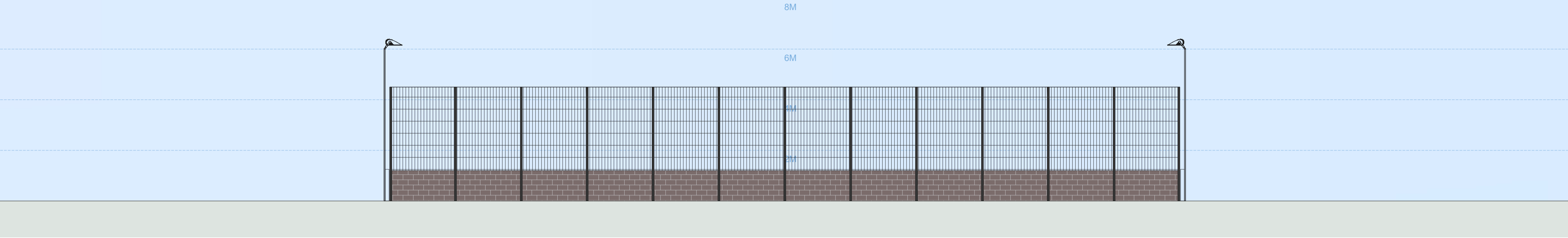
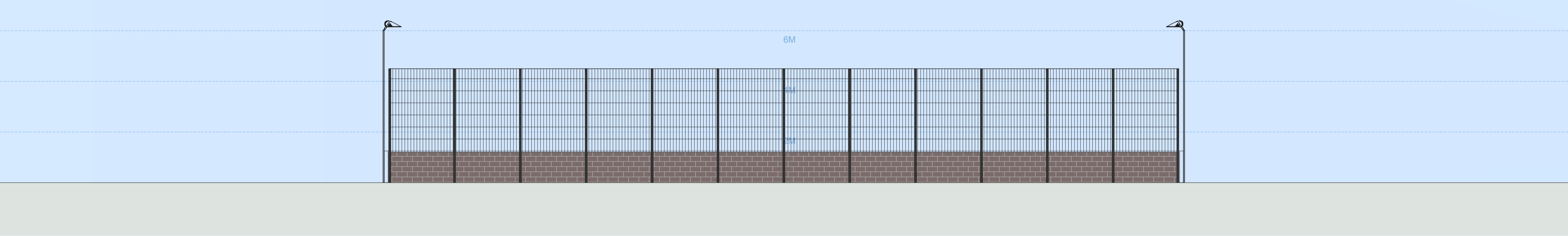


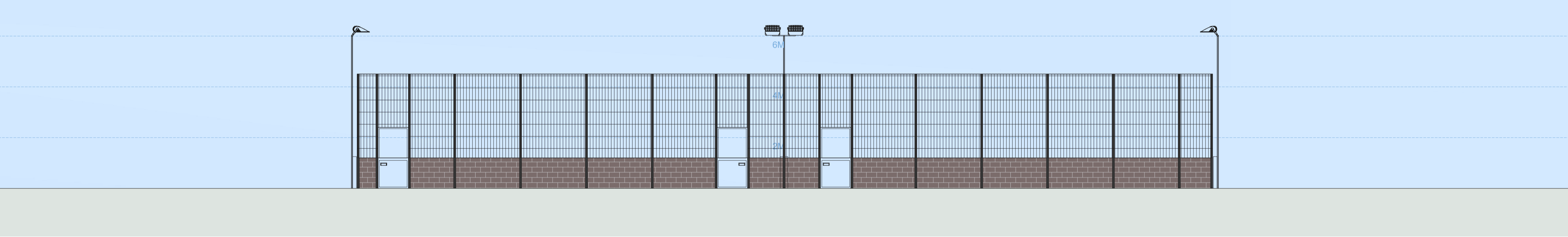
SOUTHERN MUGA'S ENCLOSURE



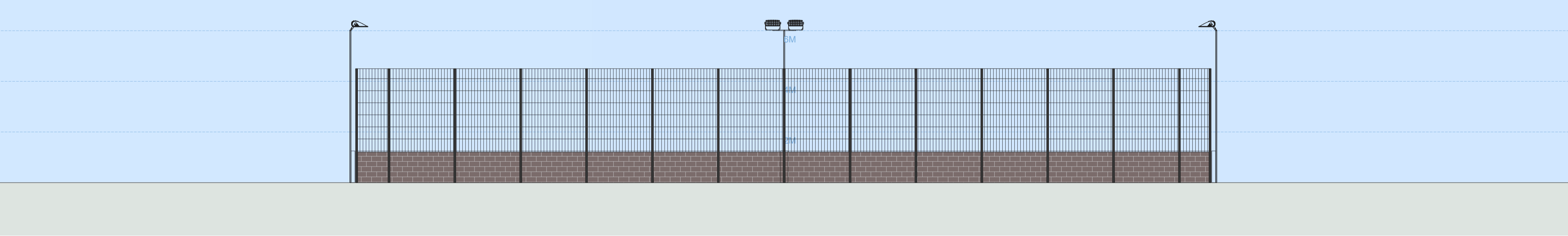
NORTHERN MUGA'S ENCLOSURE



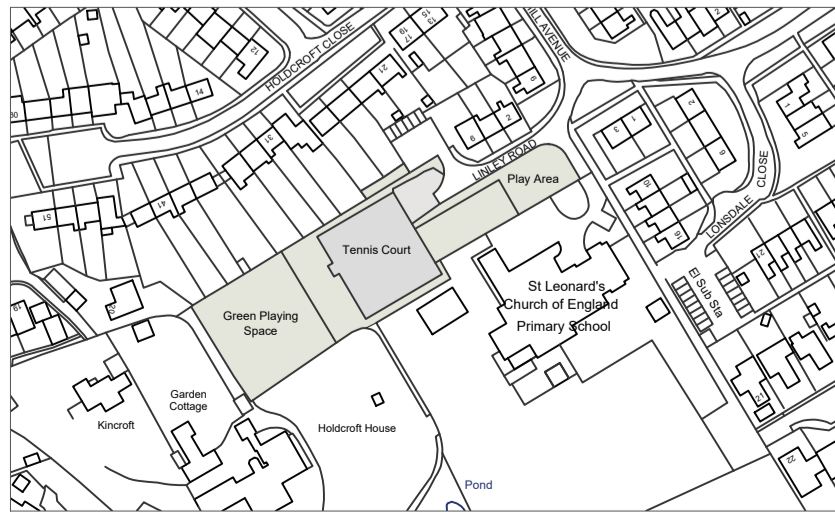
EASTERN MUGA'S ENCLOSURE



WESTERN MUGA'S ENCLOSURE



PLAN KEY



LEGEND

REPLACEMENT 4.5M HIGH BALL STOP FENCING ONTO RETAINED MASONRY BRICK WALLS ENCLOSING THE GAMES AREAS AND NEW 4.5M BALL STOP FENCE CENTRALLY DIVIDING BOTH GAMES AREAS

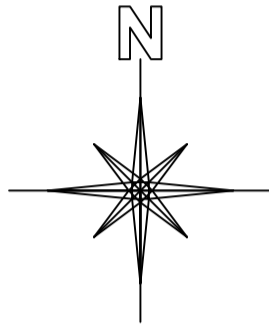
THE APPEARANCE OF REPLACEMENT BALL STOP FENCING WITH ASSOCIATED GATES WILL COMPRISE POLYESTER POWDER COATED RAL9005 JET BLACK OR RAL6005 MOSS GREEN, ALL SUPPORTED WITH AN INTERMEDIATE POST SYSTEM AND ENTRANCE GATES FOR COMMUNITY AND SCHOOL ACCESS OF MATCHING COLOUR

THE FENCING TYPE WILL BE STEEL OPEN MESH FENCING CONTAINING A GENERAL 200X50MM APERTURE (AND 66X50MM REBOUND APERTURE SECTION TO THE INTERNAL DIVIDING FENCE)

FENCE PANELS WOULD BE INSULATED FROM POSTS USING NEOPRENE WASHERS TO BE FITTED TO EVERY FENCE POST / MESH FIXING POINT TO AID NOISE REDUCTION AND ACOUSTIC ATTENUATION BY REDUCING RATTLE AND VIBRATION FROM BALL IMPACTS

NEW 6.0M HIGH LED SPORTS AREA LIGHTING

THE APPEARANCE OF NEW LOW-LEVEL LED SPORTS AREA LIGHTING WILL COMPRISE STEEL MASTS FINISHED GALVANISED (Z275) SELF-COLOURED, MOUNTED WITH LED LUMINAIRES WITHIN ALUMINIUM HOUSINGS COLOURED RAL7001 SILVER GREY



NOTES
DO NOT COPY, RE-PRINT OR RE-USE WITHOUT PERMISSION.
DO NOT SCALE FROM THIS DRAWING UNLESS FOR PLANNING PURPOSES.
ALL MEASUREMENTS ARE IN MILLIMETRES (MM) UNLESS STATED OTHERWISE.
BASE MAP REPRODUCED FROM ORDNANCE SURVEY MAP DATA © CROWN COPYRIGHT 2020.
ALL RIGHTS RESERVED. LICENCE NUMBER 100022432.

SAFETY HEALTH AND ENVIRONMENTAL (SHE) INFORMATION
IN ADDITION TO HAZARDS AND RISKS NORMALLY ASSOCIATED WITH THE TYPES OF WORK, NOTE ANY PROJECT SPECIFIC RISKS DETAILED ON THIS DRAWING.
RISKS LISTED HERE ARE NOT EXHAUSTIVE AND WILL BE DEVELOPED AND MITIGATED DURING TECHNICAL DESIGN, AND MANUFACTURING AND CONSTRUCTION PROJECT STAGES.
CONTROL MEASURES WILL BE APPLIED TO RESIDUAL RISKS AS APPROPRIATE AND ARE IDENTIFIED WITH HAZARD TRIANGLES.
INFORMATION RELATING TO USE, MAINTENANCE, AND DEMOLITION TO BE DETAILED IN DUE COURSE WITHIN A BUILDING MANUAL AND HEALTH AND SAFETY FILE.



1:100 SCALE



| REVISION | DATE | DRAWN | DESCRIPTION |
|----------|------------|-------|----------------------------|
| .00 | 15 11 2021 | TB | ORIGINAL PLANNING PROPOSAL |
| .01 | 08 12 2021 | TB | UPDATED PLANNING PROPOSAL |
| .02 | 02 01 2022 | TB | UPDATED PLANNING PROPOSAL |
| | | | |

CLIENT
BLUNSDON PARISH COUNCIL

PROJECT
COMMUNITY SPORT AND LEISURE ENHANCEMENTS

LOCATION
**RECREATION GROUND
LINLEY ROAD
BLUNSDON
SN26 7AP**

DRAWING TITLE
PROPOSED MULTI-USE GAMES AREAS ELEVATIONS

STATUS
SPATIAL COORDINATION (PLANNING)

| | | | |
|--|-------------------|--------------------|----------------------------|
| PROJECT NO. D21-023 | | | |
| DRAWING NO. D21-023 / DWG / 0008 | | | REVISION NO. .01 |
| SCALE 1:100 | SIZE A1 | DRAWN TB | CHECKED |