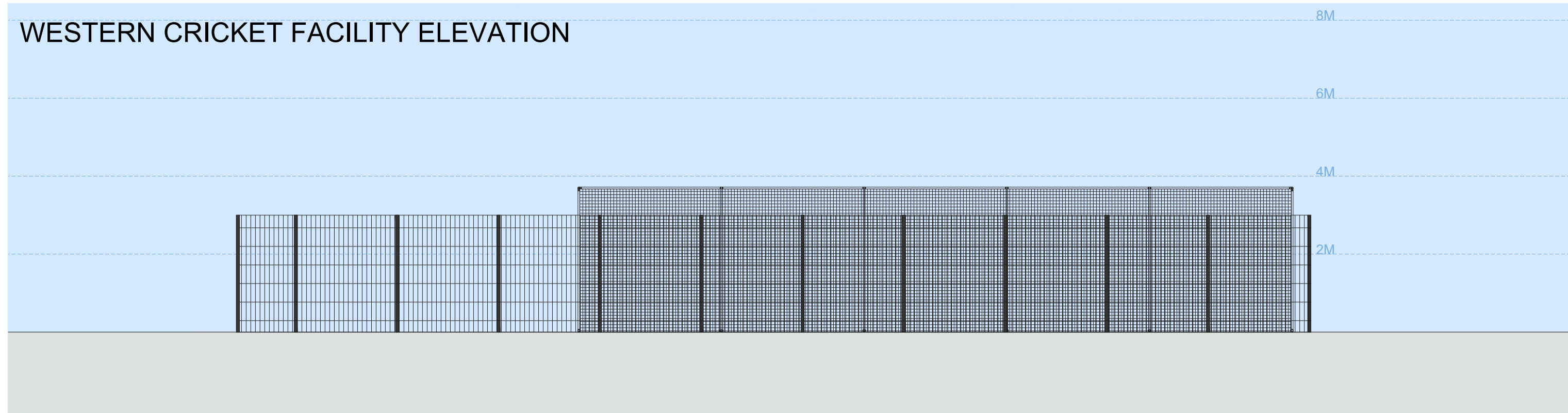
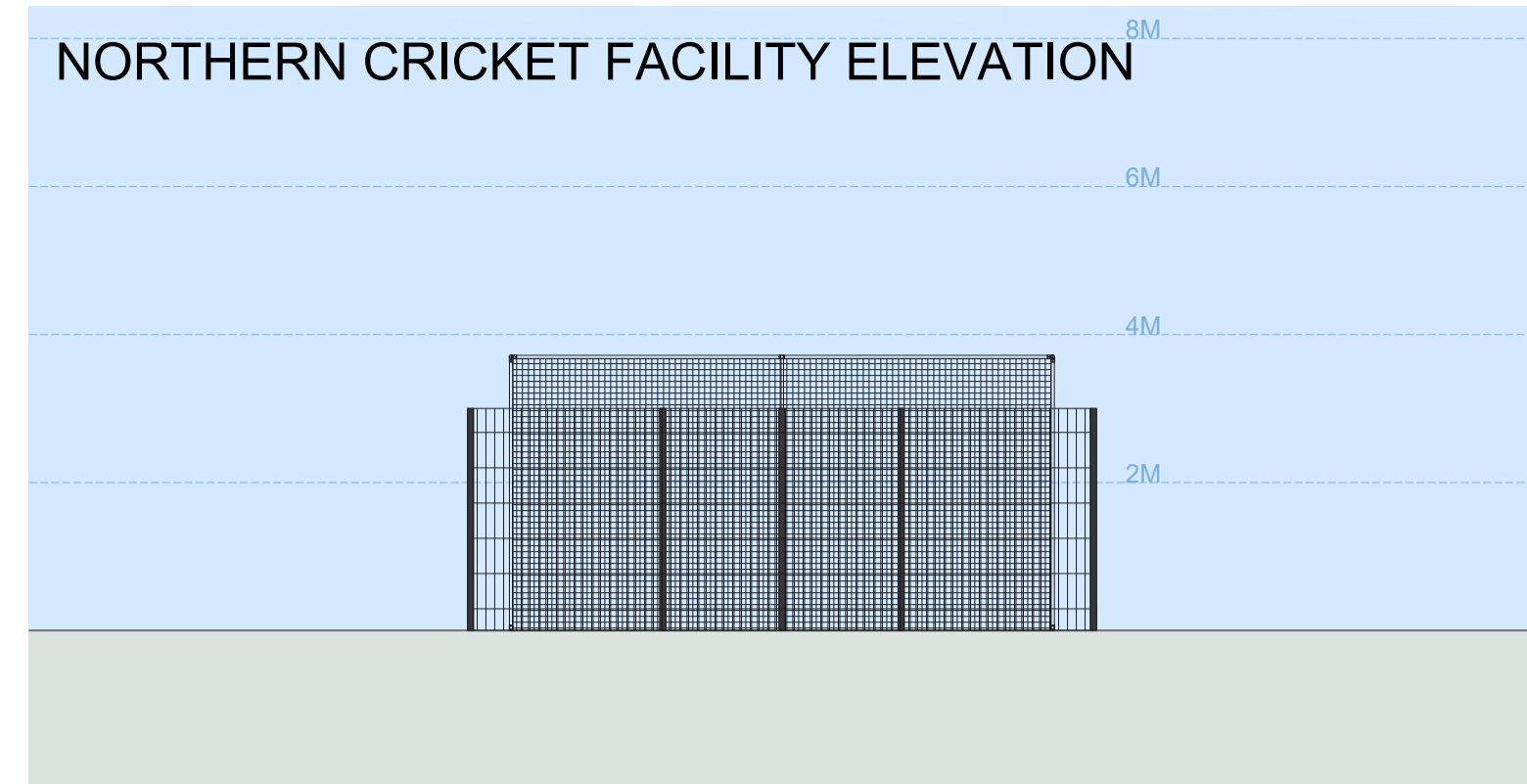


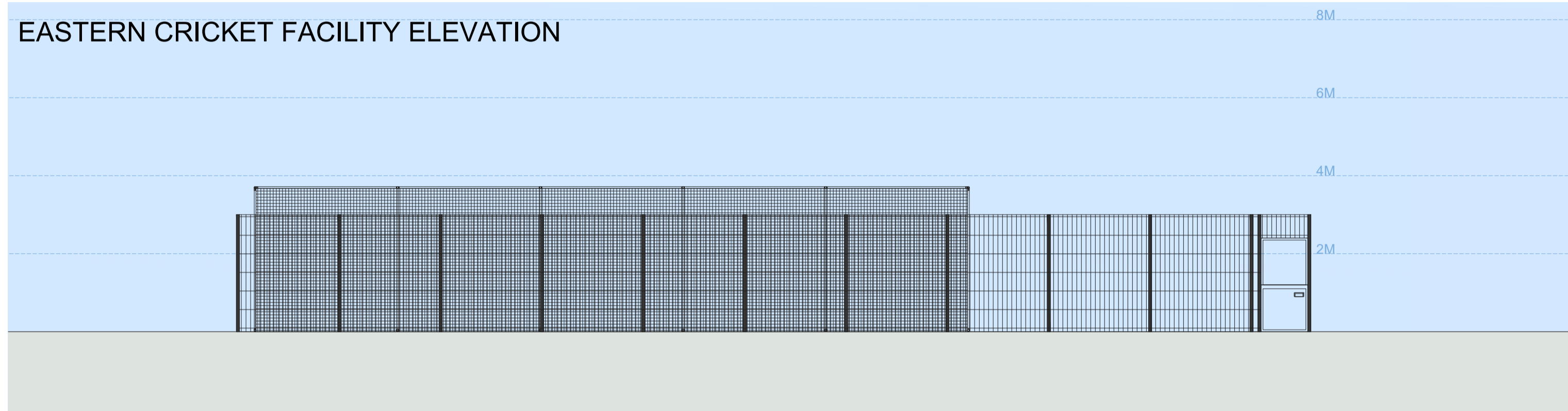
WESTERN CRICKET FACILITY ELEVATION



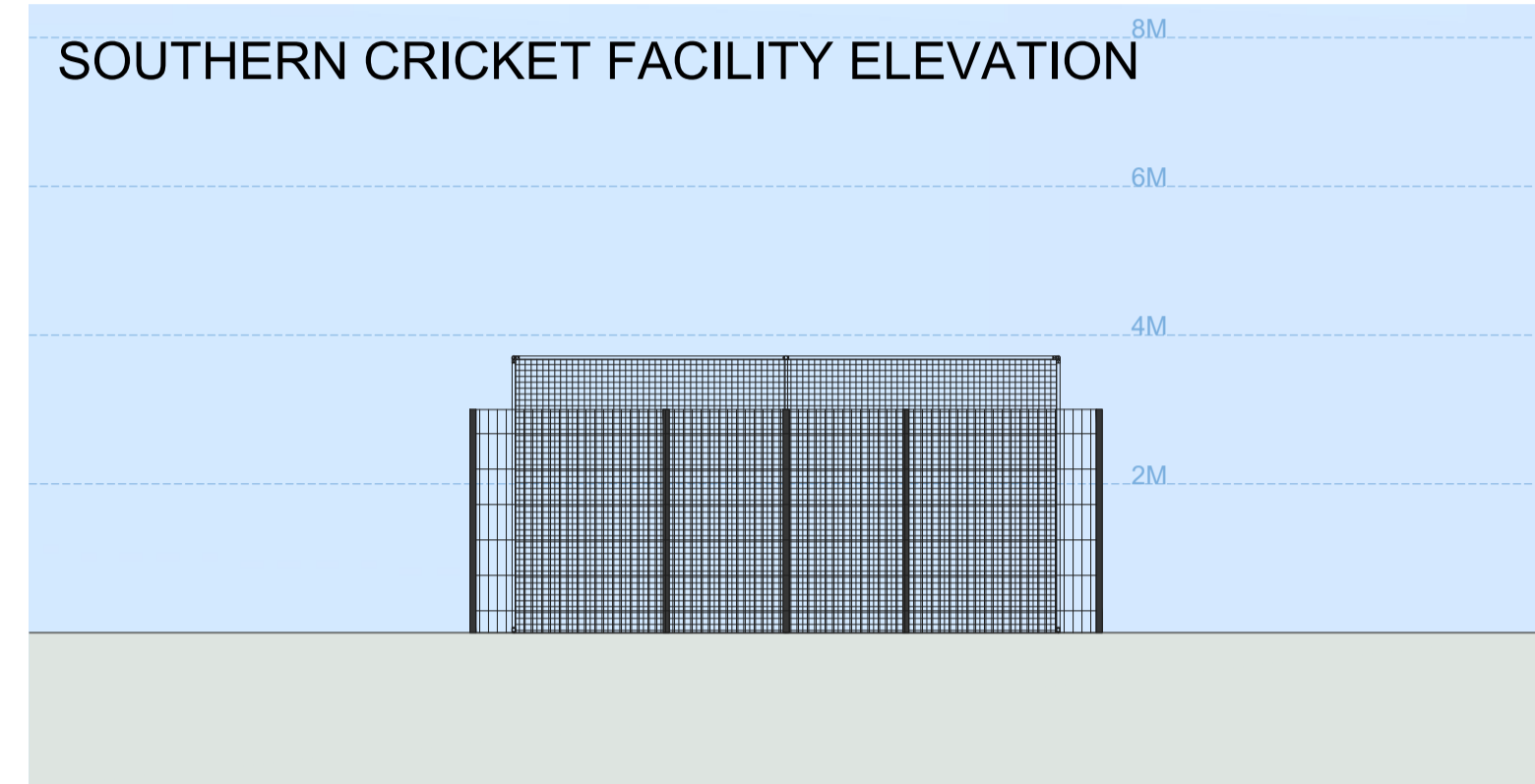
NORTHERN CRICKET FACILITY ELEVATION



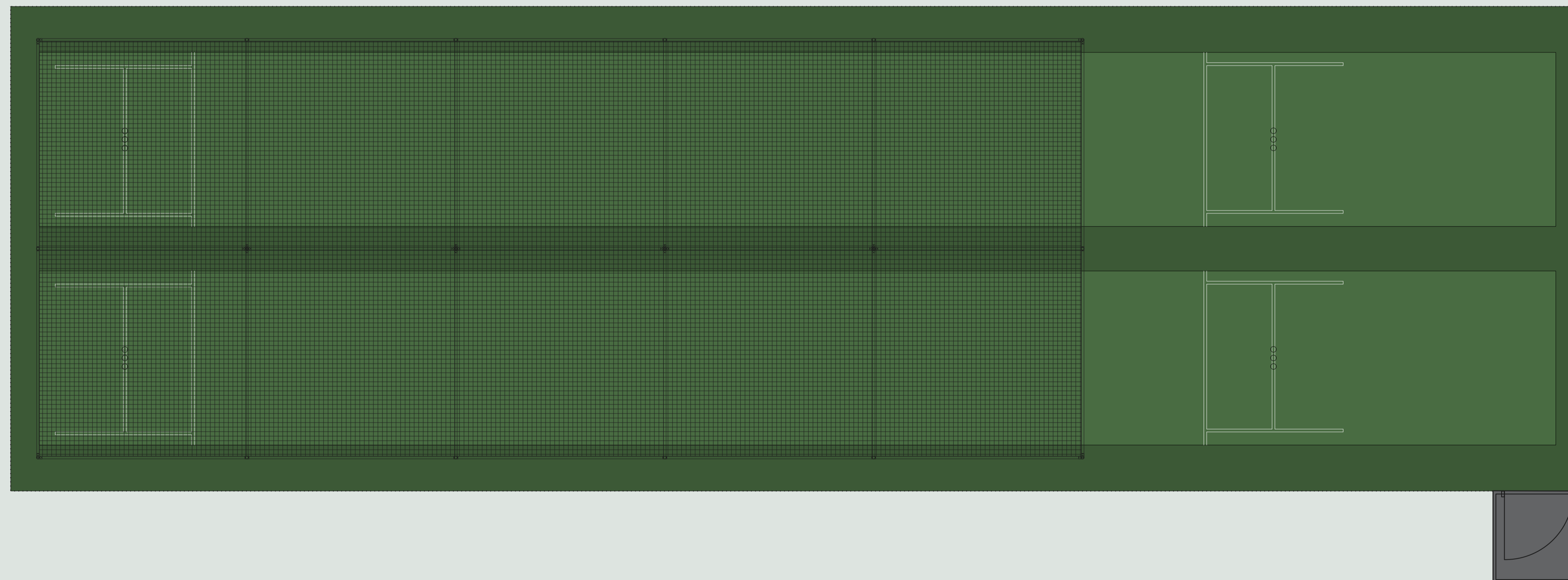
EASTERN CRICKET FACILITY ELEVATION



SOUTHERN CRICKET FACILITY ELEVATION



CRICKET CAGE ROOF ELEVATION



NOTES

DO NOT COPY, RE-PRINT OR RE-USE WITHOUT PERMISSION.
 DO NOT SCALE FROM THIS DRAWING UNLESS FOR PLANNING PURPOSES.
 ALL MEASUREMENTS ARE IN MILLIMETRES (MM) UNLESS STATED OTHERWISE.
 BASE MAP REPRODUCED FROM ORDNANCE SURVEY MAP DATA © CROWN COPYRIGHT 2020.
 ALL RIGHTS RESERVED. LICENCE NUMBER 100022432.

SAFETY HEALTH AND ENVIRONMENTAL (SHE) INFORMATION

IN ADDITION TO HAZARDS AND RISKS NORMALLY ASSOCIATED WITH THE TYPES OF WORK, NOTE ANY PROJECT SPECIFIC RISKS DETAILED ON THIS DRAWING.
 RISKS LISTED HERE ARE NOT EXHAUSTIVE AND WILL BE DEVELOPED AND MITIGATED DURING TECHNICAL DESIGN, AND MANUFACTURING AND CONSTRUCTION PROJECT STAGES.
 CONTROL MEASURES WILL BE APPLIED TO RESIDUAL RISKS AS APPROPRIATE AND ARE IDENTIFIED WITH HAZARD TRIANGLES.
 INFORMATION RELATING TO USE, MAINTENANCE, AND DEMOLITION TO BE DETAILED IN DUE COURSE WITHIN A BUILDING MANUAL AND HEALTH AND SAFETY FILE.



1:100 SCALE



1:50 SCALE



REVISION	DATE	DRAWN	DESCRIPTION
.00	15 11 2021	TB	ORIGINAL PLANNING PROPOSAL
.01	08 12 2021	TB	UPDATED PLANNING PROPOSAL

CLIENT

BLUNSDON PARISH COUNCIL

PROJECT

COMMUNITY SPORT AND LEISURE ENHANCEMENTS

LOCATION

RECREATION GROUND
 LINLEY ROAD
 BLUNSDON
 SN26 7AP

DRAWING TITLE

**PROPOSED
 CRICKET ELEVATIONS**

STATUS

SPATIAL COORDINATION (PLANNING)

PROJECT NO.

D21-023

DRAWING NO.

D21-023 / DWG / 0010

REVISION NO.

.01

SCALE	SIZE	DRAWN	CHECKED
1:100 / 1:50	A1	TB	

PLAN KEY



LEGEND

THE NON-TURF CRICKET PRACTICE FACILITY WOULD INCLUDE TWO NON-TURF CRICKET PRACTICE PITCHES COVERED WITH ARTIFICIAL CRICKET GRASS COLOURED GRASS GREEN, PLUS SURROUNDING ARTIFICIAL TURF SURFACING COLOURED GRASS GREEN
 EACH PRACTICE PITCH WOULD BE SURROUNDED WITH A 3.66M HIGH X 3.66M WIDE X 18.30M LONG TUBULAR STEEL CAGE FINISHED GALVANISED (Z275) SELF-COLOURED AND CLAD WITH BLACK COLOURED CORD NETTING TO SEGREGATE INDIVIDUAL PRACTICE BAY
 THE FACILITY WOULD BE ENCLOSED WITH 3.0M HIGH BALL STOP FENCING WITH OPEN MESH CONTAINING A GENERAL 200X50MM APERTURE AND ASSOCIATED GATE, COMPRISING POLYESTER POWDER COATED RAL9005 JET BLACK OR RAL6005 MOSS GREEN, ALL SUPPORTED WITH AN INTERMEDIATE POST SYSTEM AND ENTRANCE GATE OF MATCHING COLOUR